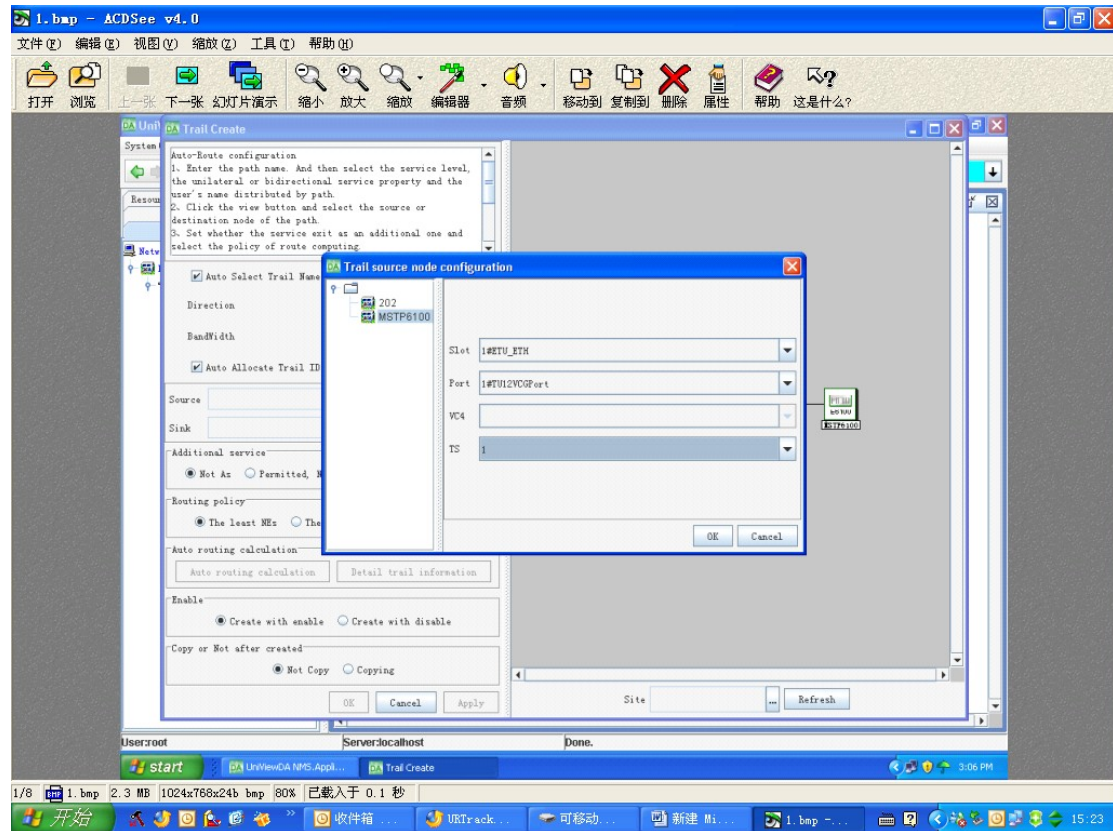
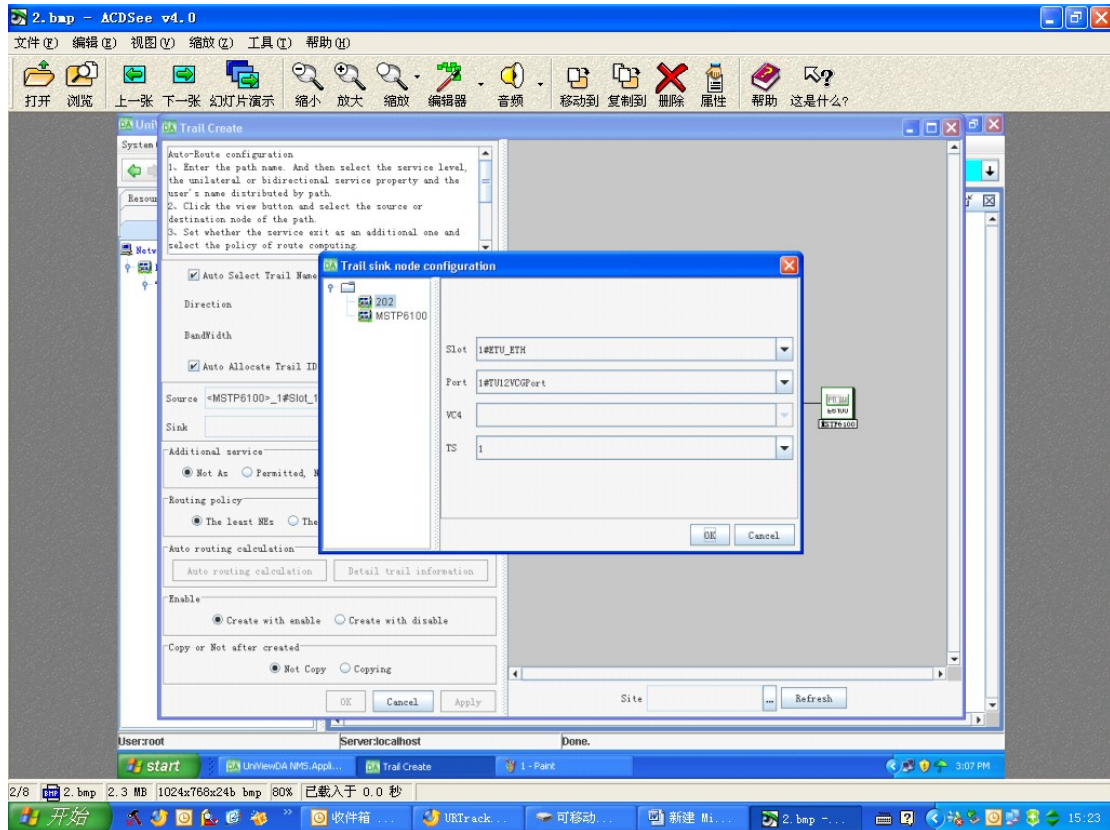


OPERATION 1

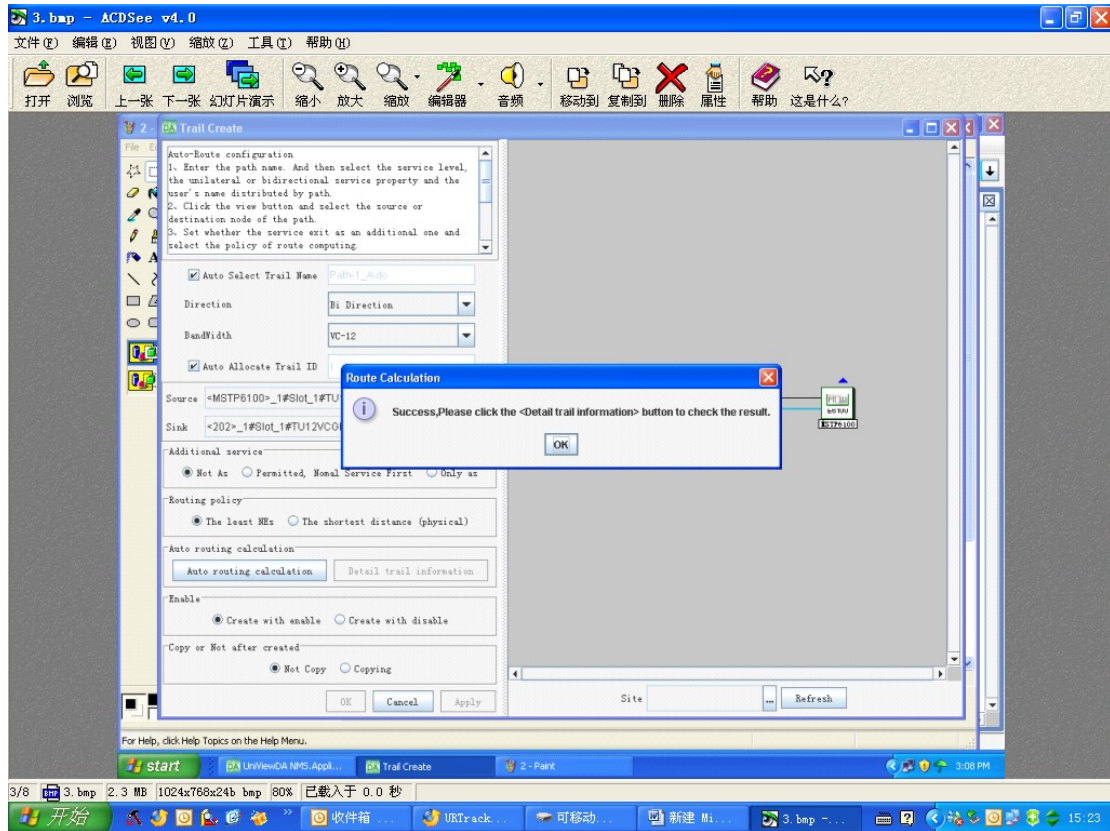
1. choose a source



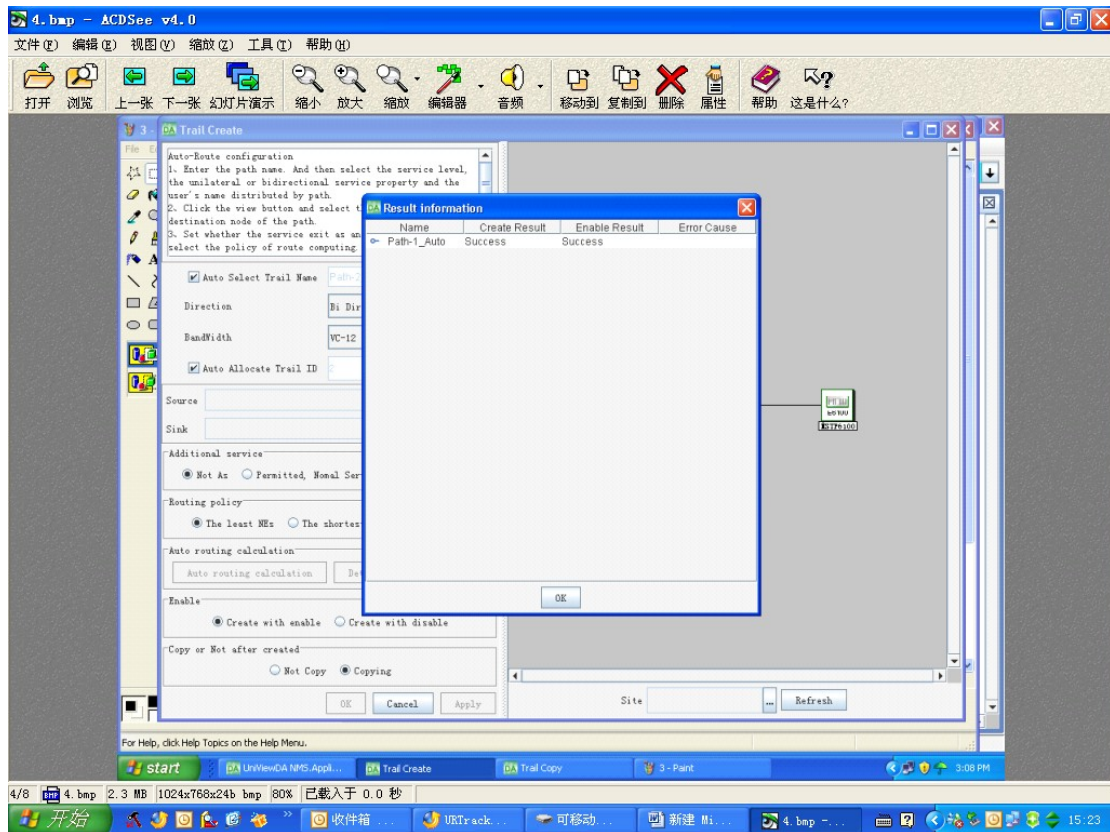
2. choose a sink



3. calculate the router automatically



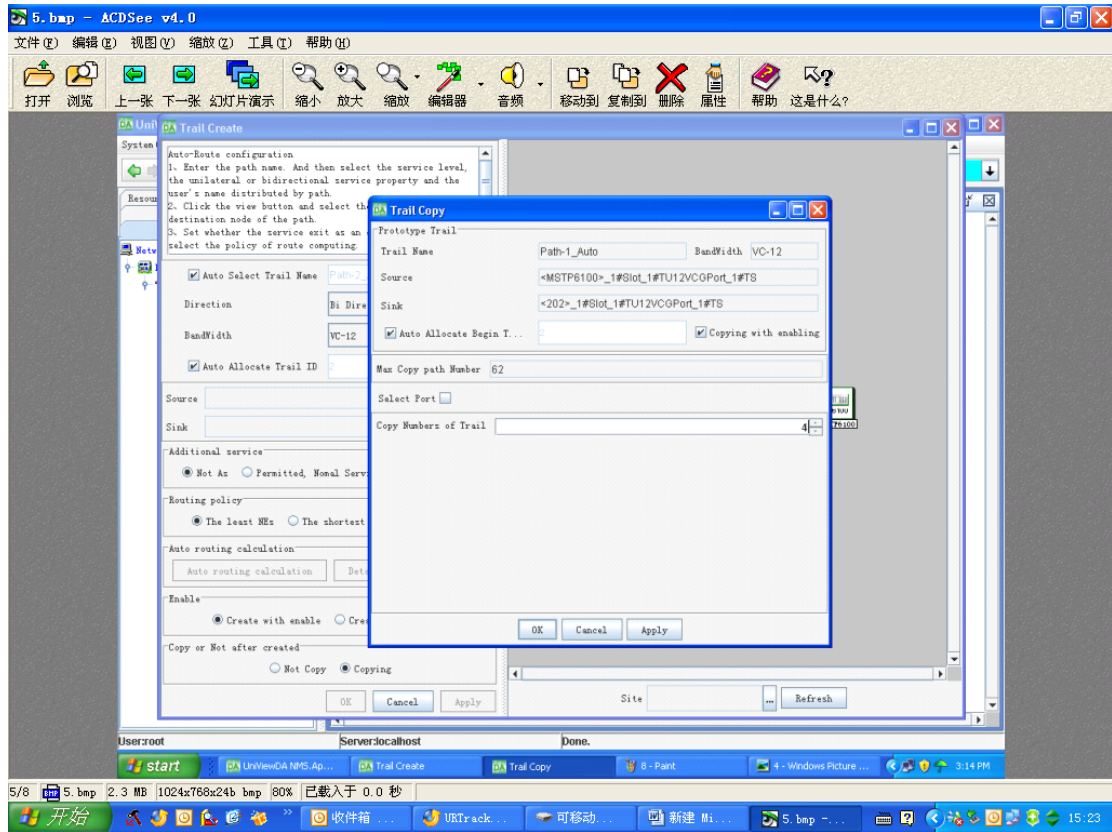
4. create successfully



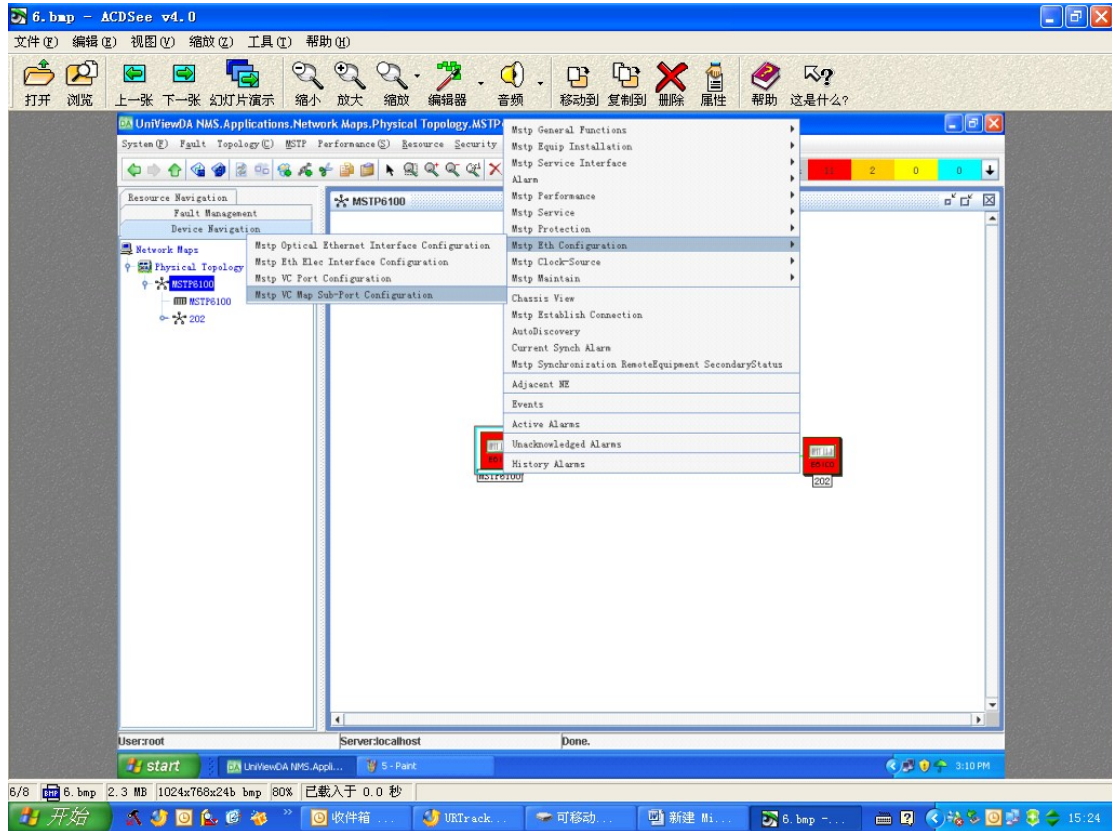
OPERATION 2

- repeat operation 1 (repeat 4 times+ former operation 1=10M , repeat 47 times + former operation 1=100M)

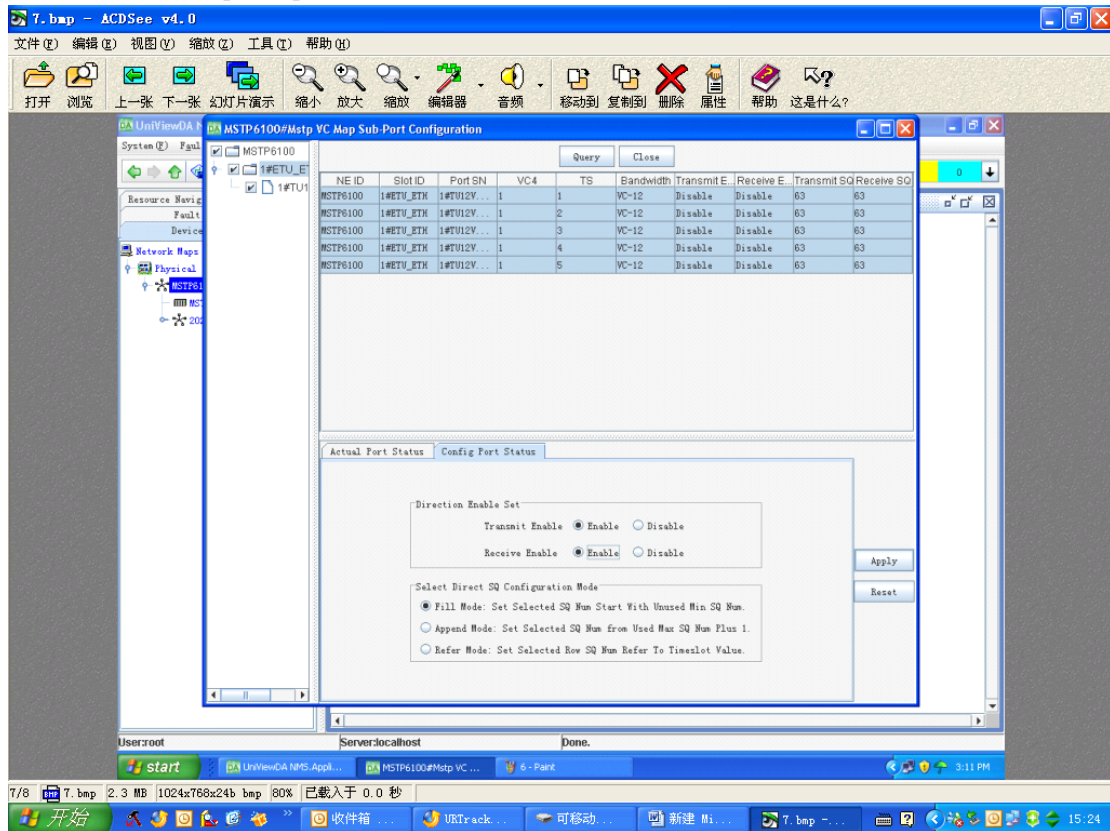
Note: there is a "Max Cope path Number" in the box, do operation 1 first, then set the "Max Cope path Number" as 4, then it will be 10M; do operation 1 first, then set the "Max Cope path Number" as 47, then it will be 100M.



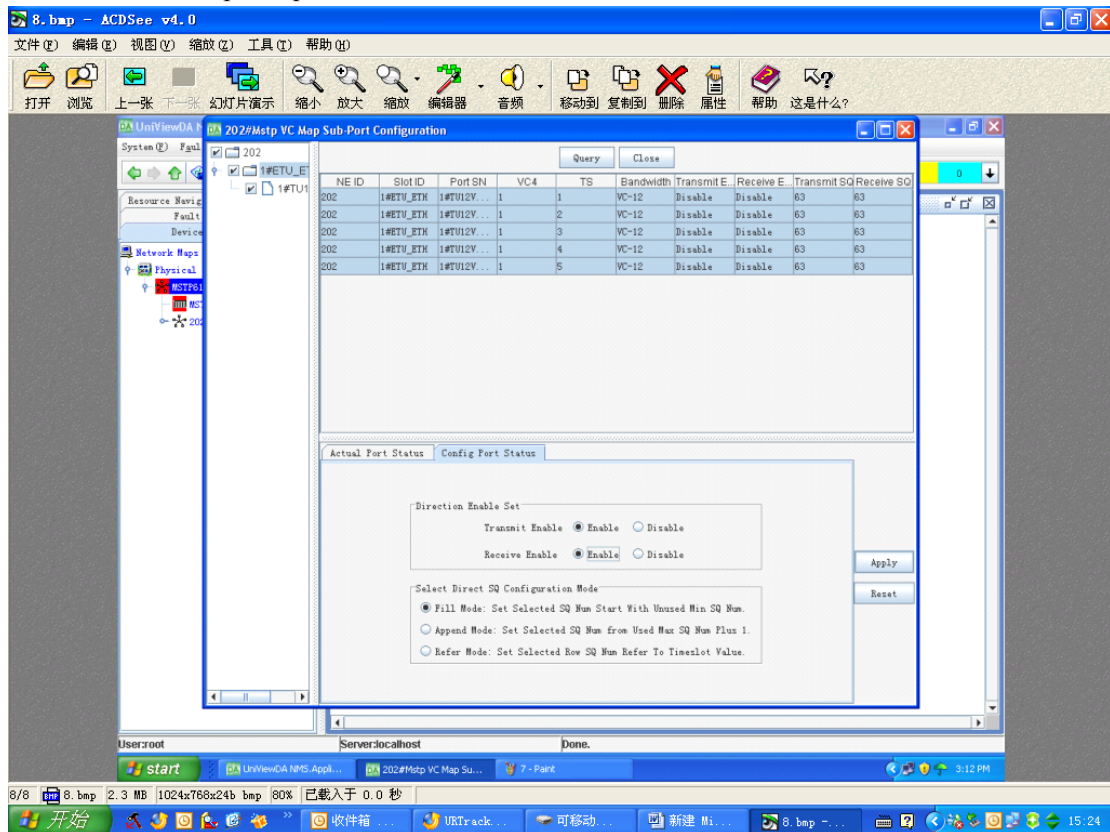
6. VC map sub-port configuration



7. enable VC map sub-port 虚级联子端口使能



8. enable VC map sub-port of the other device 另一台设备的虚级联子端口使能



Done